

## IMPORTANT - PLEAD READ



Please ensure the correct  
Floor Level Preparation  
and Expansion Guidelines are followed

### *Installation of Dura Collection SPC Hybrid Float Flooring ( UNICLIC locking system )*

Please read the installation instructions before installing your SPC Hybrid float flooring.

- This is a float flooring system, so all care must be taken to ensure that the flooring is not restricted or pinched down in any way and the correct expansion gaps are inserted and perimeter gaps maintained. Do not allow the hybrid to stick to the substrate and restrict movement. Following all the installation guidelines will prevent any issues that may arise due to restriction of the floating floor due to improper installation.
- Care and maintenance of your Hybrid flooring is also critical, so please read and follow the guidelines.



All data sheets and installation manuals ( PDF )  
and videos can be found on our site.  
[www.auslayindustries.com.au](http://www.auslayindustries.com.au)

Version Feb 2025  
Any newer version  
exceeds the previous  
version

## ***"IMPORTANT INSTALLATION INFORMATION "FLOORING EXPANSION GAPS AND FLOAT MOVEMENT"***

**IMPORTANT : SPC HYBRID FLOORING** is a floating floor system. Although SPC hybrid has very little expansion or contraction , it is important to allow float movement. So it is very important not to "pinch" the floor down or restrict the float movement in any way. Substrate preparation is also very important , it must be no more than 2mm variation up or down over a 2.0m radius. Self level your substrate before installation if it is more than this.

**Moisture :** It is very important to check the amount of moisture in your substrate before installing hybrid. The moisture reading should be no greater than 2.5% for an older slab and no greater than 3.9% for a new slab. If moisture is greater than this, you run the risk of potential issues with your hybrid flooring (warping or twisting). If moisture is present, then we recommend installing a 200um black builders plastic to cover the substrate first before installing your hybrid flooring.

**Free to Float :** Another very important factor to watch out for is if there is a potential for the back padding attached to the hybrid flooring will stick to the substrate. This can be from the substrate having a tacky feel to the surface, or the actual substrate itself. ( example is particle board or concrete ) - over a period of time the attached back pad on the hybrid may bond itself to the surface of the substrate. This will ultimately stop the flooring from being a float floor and may cause issues. To prevent a potential problem, we recommend simply rolling out a layer of 200um black builders plastic or install one of the many approved flooring underlayments first. This will prevent any issues from occurring.

**Expansion Joints :** Hybrid flooring can be installed in a single raft up to 18m x 10m. Any room sizes that exceed this should have an expansion joint installed between rafts. This will prevent any expansion issues that may occur and allow for any expansion movement over such a large area.

**Perimeter gaps :** keep your hybrid a minimum 6mm away from any wall or hard fixed structure. The structural movement of the building and the general float movement of the hybrid flooring are the main factor to consider. Keeping the correct expansion gap will allow for the float movement to occur correctly. Extremely hot conditions , or direct sunlight hitting your hybrid flooring may cause expansion issues. Although the expansion of SPC hybrid is less than 0.2mm @ 80°C , over 10 planks for example , can move up to 2mm. This is why having the correct amount of expansion gap is critical. Install your skirtings or scotias over this gap. Never fill the expansion gap, it must be left clear to allow the correct float movement.

**Skirtings and Scotias :** When installing skirting and scotias , its is important to fix to the wall only and not to the floor. You must have a gap between the shirting and the flooring so the float effect can occur. If this is installed down hard , it will create a pinch effect, stopping the floating effect from happening and can cause issues with your flooring. Ensure a 1mm - 2mm gap between the skirting and the flooring for movement , and this gap must be left clear to allow float movement.

**Kitchens and fixed structures :** Finishing around kitchen can be completed in several ways, but the 6mm gap from the structure must be allowed . Island bench gables , slide door base channels , solid structures such as brick walls or tiled skirtings. 1. Install a scotia bead, end stop, or skirting as per the above installation. Fix to the vertical only , not to the flooring. 2. Install the kick boards , scotia , skirting or end stops on the top of the flooring, maintaining the gap between the cover strip and the flooring. This will allow the float movement to still expand if it requires. ( this joint must be 6mm minimum ) . \* Never install your kitchen on top of your hybrid.

**Doorways and expansion joints ( flooring to carpet, tiles etc. ) :** It is important to allow for movement at these areas. Do not solid fix the flooring. Float movement must still be able to occur without any pinching effect. Leave a 6mm - 10mm gap between the flooring and the fixing point of any trim, such as T moulds , End stops , Transitions and cover strips. The trim or transition will cover the required joint , while allowing a float movement to be maintained. This is the same procedure for expansion joints in flooring, when transitioning into rooms or changing directions.

**Stairs :** When installing the "going" ( tread ) of a step, fully notch trowel suitable adhesive allowing a full bond to the step. Repeat the same procedure with the riser also. Maintain a 1mm - 2mm gap between the bottom of the riser and the step tread. This will allow for any expansion if it does occur.

**Concrete Substrates :** Firstly ensure that the moisture content has been checked ( previously stated ). If moisture is present, a layer of 200um black plastic is essential under the hybrid flooring. Any dips and highs must not exceed the tolerance of 2mm over a 2.0m radius. Self level the slab to ensure this before installing.

**Timber Flooring Substrates :** Strip timber, particle board , chipboard or any other building board that is used for structural floors must be fixed securely. The sub floor must have a minimum crawl space of 460mm underneath to prevent any moisture issues. Level or sand any low and high areas to a tolerance of 2mm over 2.0m . When this preparation is complete you must then install a 200um black builders plastic over the floor before installing your hybrid flooring. This will prevent the hybrid flooring from sticking to the substrate. All expansion joint requirements are to be adhered to.

**Existing Tiles :** If installing over existing tiles, make sure they are all secure. Check for highs and lows in the substrate and adhere to the same tolerance 2mm over 2.0m. If the grout joints are greater than 2mm deep then they must be levelled. If the grout joint are wider than 2mm , they must be levelled. If the existing tiles are textures in any way, we recommend a layer of 200um builders plastic be install before the hybrid flooring is laid.

**Installing over underlays:** Cork ,rubber matt, EVA or fibre underlays can be glued down or floated over the substate first. Install a layer of 200um black builders plastic over cork and rubber. This will prevent the hybrid flooring from sticking to the underlay and causing potential issues.



# SPC HYBRID FLOORING

www.auslayindustries.com.au

Stone Plastic Composite Rigid Core Click Plank Flooring known as hybrid flooring

DURA Collection - "IXPE BACK PADDING FITTED"

## INSTALLATION OF SPC HYBRID FLOORING - Dura Collection (uniclic)

Auslay Industries Pty Ltd recommend that all hybrid flooring be installed by a professional.

### General Guidelines for Installation of your SPC Flooring with the Uniclic angle locking system

1. Inspect product in good lighting conditions to ensure it is correct (colour, quality and quantity) as ordered. Open boxes cannot be returned. Auslay Industries Pty Ltd hybrid flooring is for interior use only.
2. Auslay Industries hybrid flooring needs to be acclimatized within the 12 hours prior to installation, unopened boxes should be acclimatized for a minimum of 12 hours at temperature between 18-27°C and a relative humidity between 30- 60%. This temperature and humidity range is to be maintained before, during and after installation.
3. Subfloor must be solid, flat (2mm over 2000mm), dry and clean. Auslay industries hybrid flooring can be installed over most existing floor coverings provided the floor is flat, dry and in the case of tiles in a residential installation, grout line tolerances are no more than 2mm wide and 2mm deep. Otherwise grout joints should be filled to the level of the tiles with a suitable leveler. Carpet, carpet underlay, vinyl plank/sheet and/or existing floating floors is not a suitable subfloor.
4. Minimum 6mm expansion gaps to be provided at all fixed vertical surfaces (including around cabinetry, island benches and all fixed structures). Installed rafts should never exceed 18m x 10m. Install expansion joints if larger, and install expansions when transitioning from hallways to adjacent rooms to allow for movement.
5. Check each board for visual defects and locking system integrity in optimal lighting before and during installation. Clean any debris out of locks before installation. Always use boards from several packs and inspect each board to get the best-balanced visual installation. Never install defective products.
6. Boards can be cut with the score-and-snap method for straight cuts, and with saws for complex cuts. If cutting boards using any type of saw, dust extraction and/or respiratory protection must be used as a minimum P2/N95 mask.
7. Skirting boards and/or end caps will be needed to cover the perimeter expansion gap. Fixings should be to the wall only, never directly to the floor. Silicone or caulking compound is not recommended between this gap and will void warranty.
8. Minimum width of boards for first and last rows is 50mm. End stagger of joins in rows should be minimum 300mm.
9. **Ensure that the first 3-4 rows are checked for straightness using a string line.** Continue to check for straightness at all stages of the installation.
10. Auslay Industries hybrid floors are stable and can be installed in individual rooms up to 18m long and 10m wide. In complex or multi room installation, internal expansion joints at doorways / thresholds are required. Larger rooms will require an expansion joint between rafts greater than the 18m x 10m.

### Please note:

Although Auslay industries hybrid floors are waterproof, it should not be used as a moisture barrier, and should not be installed in areas that have a continual risk of excessive moisture/ flooding such as bathrooms, toilets, laundry.

Hybrid floors must be installed using a floating floor system – they need to be able to move. Ensure expansion gaps allow for movement, and furniture items exceeding 200 kg are not placed on the floor. Insufficient expansion gaps, including in doorways and under trims will cause a floor to potentially buckle, peak, cup, and/or separate, leading in most cases to floor failure.

Uneven subfloors can cause the locking system to break and/or the floor to sound drummy, or become noisy, and will cause early deterioration and/or failure of the floor.

When preparing wood floor boards or sheet-based subfloors, install rigid underlay sheet to achieve a smooth surface to install over. Common materials may include MDF, hardboard, plywood, or cement sheet. Any humps or dips need to be attended to before hand, ensuring a tolerance of 2mm over a 2.0m radius is achieved.

Floors should never be laid over subfloor spaces where there are moisture problems. Doing so can lead to deterioration of the floor coverings and damage to the subfloor structure. If minor subfloor space moisture concerns are present, the moisture level needs to be tested and be in accordance with the latest Australian Standard. **It is recommended to install 200µm plastic sheet (black builder's plastic) before the hybrid flooring is installed over any subfloors. Also, it's essential that a similar plastic sheet is used when installing planks directly over all particleboard or OSB sheet subfloors, as the coarse fibres have been known to catch on the integrated underlay, impeding natural movement of the floor.**



# SPC HYBRID FLOORING

www.auslayindustries.com.au

Stone Plastic Composite Rigid Core Click Plank Flooring known as hybrid flooring

DURA Collection - "IXPE BACK PADDING FITTED"

## INSTALLATION OF SPC HYBRID FLOORING - Dura Collection (uniclic)

Auslay industries hybrid floors are not recommended for hairdressing salons. Staining is the main factor.

Auslay Industries hybrid floors are not recommended for installation in wet areas, and if done so, the warranty will be voided.

Cleaning and Care Instructions must be followed to maintain the product warranty. Please ensure these instructions are left with the client.

**All Subfloors** must adhere to AS 1184 2012 standards for resilient floorcoverings. Subfloor surface must be smooth, flat, dry, clean and rigid. Imperfections measuring greater than (2mm) should be repaired by grinding bumps or ridges or filling voids with Portland-based patching compounds suitable for your substrate.

Remove any existing base moulding and/or skirting and undercut door frames can slide under the jambs. Allow for the thickness of the underlayment also when doing this. A minimum of 1-2mm gap between the hybrid and skirting is required.

**Concrete subfloors** : It is important to adhere to AS 1184 2012 standards for resilient floorcoverings. Subfloor surface must be smooth, flat, dry and clean. Imperfections measuring greater than (2mm) should be repaired by grinding bumps or ridges or filling voids with Portland-based patching compounds suitable for your substrate. Acceptable moisture levels in concrete according to ASTM standard, when testing via ASTM F2170, the RH level of a concrete slab needs to be at or below 75%. The moisture reading should not read any more than 2.5% for an older slab , and no greater than 3.9% for a new slab.

**\*You must install 200µm plastic sheet (black builder's plastic) before the hybrid flooring is installed over any subfloors.**

### Existing floor coverings ( tiles, vinyl, timber )

Subfloor surface must be smooth, flat, dry, clean and rigid. Do not install over any type of floating floor systems. Subfloor Imperfections measuring greater than (2mm over a 2.0m radius) should be repaired by sanding bumps or ridges or filling voids with Portland-based patching compounds. Install a 200um black plastic over the timber substrate before installing Hybrid flooring.

\*Tile grout joints deeper than 2mm and wider than 2mm must be smoothed using a levelling compound.

### Plywood , compressed sheeting, Masonite, chipboard sheeting

All substrates must comply with and not exceed the building codes maximum deflection limit : L/360 . Subfloor surface must be smooth, flat, dry, clean and rigid. Imperfections measuring greater than (2mm over 2.0m radius) should be repaired by sanding bumps or ridges or filling voids with Portland-based patching compounds. **\*You must install 200µm plastic sheet (black builder's plastic) before the hybrid flooring is installed over any subfloors.**

### Wood / Timber Strip board Flooring

When preparing wood floor board subfloors, install rigid underlay sheet to achieve a smooth and stable surface to install over. Masonite, MDF, Compressed cement sheets or similar. Perform any floor preparation required to make level before installing the rigid sheeting. Always install sheeting according to the manufacturers guide lines. All Subfloors must comply with and not exceed the building codes maximum deflection limit : L/360 . Subfloor surface must be smooth, flat, dry, clean and rigid. Imperfections measuring greater than (2mm over 2.0m radius) should be repaired by sanding bumps or ridges or filling voids with Portland-based patching compounds. **\*You must install 200µm plastic sheet (black builder's plastic) before the hybrid flooring is installed .**

### Acoustic Underlayment Installation

Only use Auslay Industries recommended acoustic underlayments. Please contact us to confirm if you can use your choice of underlayment with our hybrid flooring.

### Wet Area Installation

Auslay industries does not recommend using our SPC hybrid in wet areas. In Queensland , the QBCC does not recognize SPC hybrid as a form of flooring for wet areas.

### Radiant underfloor heating

**\*\* Radiant heated subfloors should not exceed (28°C)**



# SPC HYBRID FLOORING

www.auslayindustries.com.au

Stone Plastic Composite Rigid Core Click Plank Flooring known as hybrid flooring

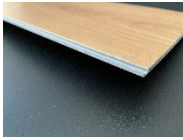
DURA Collection - "IXPE BACK PADDING FITTED"

## INSTALLATION OF SPC HYBRID FLOORING - Dura Collections

Work out the layout of the room before beginning. When ready, mark your first planks starting line using a chalk line. Begin installing by laying the first row from left to right with the extended upper tongue side towards the wall with a minimum gap of (6mm) up to (10mm) and the extended lower tongue away from the wall.

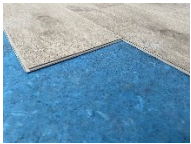


Interlock short ends by inserting the tongue side into the groove at an approximate angle of 20°. Properly locked planks will have a near seamless appearance & are not easily pulled apart. Repeat this procedure until the first row is complete.

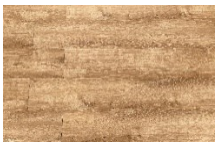


Insure the first row is straight by using a spare plank to align the seam. This is essential for a secure installation & straightness in successive rows.

Plank can be cut with a straight edge and utility knife. Simply line up the straight edge, score the plank until you have penetrated the clear wear layer, and snap.



Begin laying the second row by inserting the long edge into the long groove edge of the first row at approximately 20 degrees until fully inserted and then drop flat.



When laying subsequent rows, it is essential to stagger joints to insure planks are adequately mixed to achieve a random appearance in the flooring. We suggest using the cut end of the last plank of the first row as first plank of the second row. Appearance can be altered to suit your taste.

In order to lay the next plank, lock the short ends with the long edges slightly apart taking care to insure the lock is solid and seam is even

Carefully lift the plank to a 20° angle and lock the long edge by sliding the tongue into the groove edge. Properly installed planks will have a minimal visible seam. Continue installing second row in the same fashion and cut the final plank of the row taking care to leave the same approximate gap between the plank and wall. Repeat these installation steps until all rows are complete. Cut in the last row, making sure to leave the 3mm – 6mm gap against the wall. This gap can then act as an expansion joint. Refit any base skirting boards. Follow the instructions for installing skirting board

### Radiant Underfloor Heating approved

The underfloor heated must not exceed the maximum temperature of 28°C



www.auslayindustries.com.au

# SPC HYBRID FLOORING

Stone Plastic Composite Rigid Core Click Plank Flooring known as hybrid flooring

DURA Collection - *“IXPE BACK PADDING FITTED”*

## ***INSTALLATION OF SPC HYBRID FLOORING - Dura Collections***

Crawl spaces must be a minimum of (46 cm) from the ground to the underside of the joists. A ground cover of 200um black polyethylene film is essential as a vapor barrier with joints lapped 15 cm and sealed with moisture resistant tape. The crawl space should have perimeter venting equal to a minimum of 1.5% of the crawl space square footage. These vents should be properly located to foster cross ventilation. Local regulations prevail where necessary.

Most installations will need approximately a 7% cutting and waste allowance added to the square footage of the room. Proper conditioning of the job site is necessary. Flooring planks should not be exposed to sudden changes in temperature. Store, transport, and handle the flooring planks in a manner to prevent any distortions. Distortions will not disappear over time. Store cartons flat, never on edge. Ensure that the flooring planks are lying flat at the time of installation.

Installations of carpet, tiles, metal strips, and other transition mouldings should not push fully into the flooring and should allow for some slight movement wherever practical. For rooms, wider or longer than 15m, the use of T-moldings is required to account for the normal movement or seasonal expansion/contraction of the floor. If the homeowner does experience gapping then we would suggest the contractor tap the planks back together since they may come apart for longer run lengths.

### **SUITABLE SUBSTRATES**

All substrates listed below must be properly prepared and meet certain requirements. There may be other exceptions and special conditions (as noted below) for these substrates to be suitable for the locking installation system.

- Concrete – dry and smooth on all grade levels
- Suspended wood sub-floors with approved preparation – must have a minimum of 46cm well-ventilated crawl space underneath
- Suspended hardwood flooring that is fully adhered, smooth, and square edge without texture
- Ceramic tile, Terrazzo, Marble
- Polymeric Poured (seamless) Floors
- Ply-Wood/OSB-3/4" , Particleboard 40lb. Density , fibre cement sheet

### **DO NOT INSTALL OVER**

- Existing resilient tile floors that are below grade or drummy or not adhered properly
- Existing float cushion-backed vinyl flooring or vinyl plank / sheet flooring
- Carpet or carpet underlay
- Hardwood flooring that has been installed directly over concrete
- On uneven stairs or in rooms with sloping floors or floor drains
- On substrates must comply with and not exceed the building codes maximum deflection limit : L/360



# SPC HYBRID FLOORING

www.auslayindustries.com.au

Stone Plastic Composite Rigid Core Click Plank Flooring known as hybrid flooring

DURA Collection - "IXPE BACK PADDING FITTED"

## INSTALLATION OF SPC HYBRID FLOORING - Dura Collections

### Maintenance and Care

- 1. Immediately** – clean up any liquid or water-based spills or any other potentially staining marks using a dry clean cloth. Though Homely Flooring hybrid floors are waterproof, don't leave liquid/water-based spills there just to test it. Homely Flooring hybrid floors are resistant to most spots and stains, however some materials or colourants (such as tar, grease, oil, dyes, waxes, ball point/marker pens, or foods/beverages containing strong dyes as mustard, curry, cordial, coffee, tea etc.) may under certain conditions migrate into the wear layer causing stains.
- 2. Daily** or as required – remove any loose dirt or grit which could damage the floor by sweeping with a soft dry broom or vacuum (preferably with an effective dust filter and suction nozzle for hard surfaces turning off a powerhead, if installed).
- 3. Weekly** – damp mop the floor using water and a pH neutral cleaner to remove any footprints, dirt and other stains or marks.
- 4. As required** – stubborn scuffs and stains can easily be removed using a damp cloth or sponge with a diluted solution of methylated spirits. Ensure the methylated spirits is completely rinsed from the flooring.
- 5. Never use a steam-mop or steam-cleaner.**
6. Never use abrasive cleaners, nylon scouring pads, steel wool, scouring powder or bleach as they may damage the floor.
7. Never use oil, soap, wax or polishes as these finishes may make the floor slippery and can leave a dull finish on the floor.
8. Place entrance mats (which must not have a rubber backing) at all external doors to trap dirt, sand, grit, moisture and other substances from shoes:
  - Double entrance mats are required for residential installations – 1 coarse external mat, and 1 medium internal mat.
  - Triple commercial mats with a minimum walk off zone of 3.5 metres are required for commercial installations – refer to mat manufacturer. Mats must be cleaned regularly.
9. Avoid placing any items with rubber backing on hybrid flooring, as over time, it may undergo a chemical reaction with the wear layer, potentially causing stains.
10. Use non-staining felt protectors under heavy pieces of furniture. Fit office chairs, filing trolleys, mobile containers and old hard- or sharp-edged castors on furniture with soft treads or castors. Chair pads should be used under desk chairs with castors.
11. Heavy objects and furniture such as large bookcases, full size billiard tables, freestanding bathtubs or kitchen units should not be situated on any floating installation. This can lead to the floor failing to respond to contraction and expansion, which can cause squeaking, gapping and possible failure.
12. Never drag, slide or roll furniture or appliances across your floor. Protect the surface if using a trolley to move heavy objects.
13. Floor to ceiling windows coupled with the Australian/New Zealand sun can create floor surface temperatures over 70°C. Auslay industries hybrid planks are manufactured to be stable in low and high temperatures (0-80°C). However, your floor should be protected from extreme temperatures and strong direct sunlight using interior temperature and humidity control (recommended temperatures 10-30°C and relative humidity levels between 30% and 70%), window tinting, awnings and/or curtains/ blinds. Dramatic temperature changes and/or extreme humidity can cause joints to lip/gap and prolonged direct sunlight will cause fading which will not be covered by the manufacturing warranty. To avoid fading and sun related issues you must use window coverings with UV protection. Hybrid flooring is not recommended for sun rooms.
14. Pet claws can scratch the flooring. Keep nails trimmed.
15. Spiked heels or shoes in need of repair can severely damage your floor. In areas of excessive traffic and wear, make use of runners or area rugs. Rugs should be cleaned regularly.



www.auslayindustries.com.au

# SPC HYBRID FLOORING

Stone Plastic Composite Rigid Core Click Plank Flooring known as hybrid flooring

DURA Collection - *“IXPE BACK PADDING FITTED”*

## ***INSTALLATION OF SPC HYBRID FLOORING - Dura Collections***

**\*\*DO NOT USE STEAM MOPS as they can damage your hybrid flooring.**

### **Warranty – ( PLEASE REFER TO OUR WARRANTY CONDITIONS PDF )**

Auslay Industries does not warrant any fading caused by long term exposure to UV light sources. It is recommended that any areas subjected to this direct light exposure be protected by means of shade coverings to reduce ultra-violet light entering. Auslay Industries does not warrant warping or gapping caused by any structural and or subfloor movement, or any warping or gapping that may be caused by extreme changes in temperature. All planks leaving our manufacturers factory are subjected to vigorous batch controls, as well as checks for visual defects. Always check for any visible defects and discard any planks you may consider to be imperfect before installing. Auslay Industries will not be responsible for any SPC planks that have been installed with visual defects. Auslay Industries will not be responsible for scratching the surface or staining the surface of the SPC flooring as it is classed as resistant only. \*\* note : the use of steam mops are not recommended for any use on SPC flooring as it can damage or discolour the surface.